

BUTTERFLY VALVES

VFA-SERIES



- HERMETIC SEAL
- COMPACT DESIGN
- EASY TO CONTROL
- EASY INSTALLATION IN ALL POSITIONS
- EASY TO SERVICE
- DESIGNED FOR EASY ACTUATOR INSTALLATION
- VERY LOW PRESSURE LOSS
- CONSTRUCTION IN ACCORDANCE WITH UNI 9245 STANDARDS

Tartarini's VFA butterfly shut-off valves come complete, in the standard version, with PN 16 UNI 2282 or ANSI 150 B16.5 collar flanges.

Thanks to special design and engineering, the valves feature very low pressure losses and superior seal. The valves can be used with all kinds of non-corrosive fluids including natural gas, air, water, etc.

Standard models:

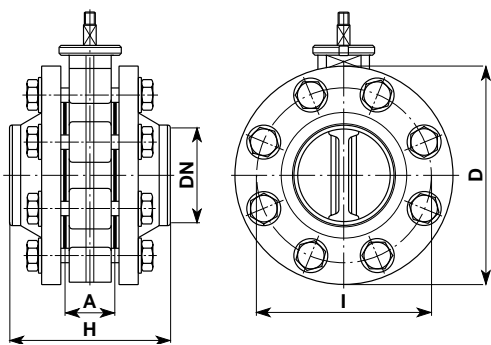
- VFA/** - Lever-operated butterfly valve. Available in DN50 to DN500 sizes.
- VFA-MR/** - Butterfly valve with rev reducer control. Available in DN50 to DN500 sizes.
- VFA-MP/** - Butterfly valve with control rod coupling for recessed installation. Available in DN50 to DN200 sizes.
- VFA-MS/** - Butterfly valve with control rod coupling for underground installation. Available in DN50 to DN200 sizes.

Special versions:

- BM4-E** - Overpressure slam-shut valve with electromagnetic triggering device. Vertical and horizontal versions available in DN50 to DN200 sizes.
- VFA-GS/** - Butterfly valve with parting joint.
- VFA-GD/** - Butterfly valve with dielectric joint.

VFA Series

Dimensions applicable to all models



All standard valves are supplied complete with PN16 or ANSI 150 counterflanges secured to the body by means of coach screws so that valve can be used as a terminal unit.

Counterflange gasket thickness:

1.5 mm for DN 50 to DN 200

3 mm for DN 250 to DN 500

The various models feature a number of different control devices capable of satisfying all requirements.

The listed specifications, applicable to all models, refer to the valve body alone.

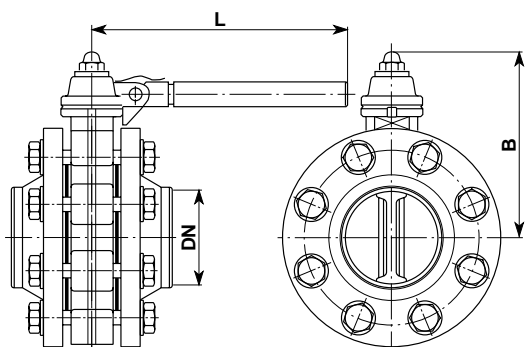
PN16 UNI 2282 FLANGE CLASS

DN	A	D	H	I	Screws Dimensions	Qty
50	43	165	136	125	M16 x 40	8
65	46	185	139	145	M16 x 40	8
80	46	200	149	160	M16 x 45	16
100	52	220	159	180	M16 x 45	16
125	56	250	169	210	M16 x 50	16
150	56	285	169	240	M20 x 50	16
200	60	340	187	295	M20 x 55	24
250	68	405	214	355	M22 x 60	24
300	78	460	240	410	M22 x 65	24
350	78	520	248	470	M22 x 70	32
400	102	580	278	525	M27 x 80	32
500	127	715	313	650	M30 x 90	40

ANSI 150 B 16.5 FLANGE CLASS

DN	A	D	H	I	Screws Dimensions	Qty
2"	43	152	173	120.6	M16 x 40	8
2 1/2"	46	178	189	139.7	M16 x 45	8
3"	46	191	189	152.4	M16 x 45	8
4"	52	229	208	190.5	M16 x 45	16
5"	56	254	237	215.9	M20 x 50	16
6"	56	279	237	241.3	M20 x 55	16
8"	60	343	267	298.4	M20 x 60	16
10"	68	406	278	361.9	M22 x 70	24
12"	78	483	313	431.8	M24 x 70	24
14"	78	533	338	476.2	M27 x 80	24
16"	102	597	362	539.7	M27 x 80	32
20"	127	699	422	635	M30 x 90	40

VFA/ LEVER-OPERATED BUTTERFLY VALVES



When ordering, please specify:
Code, DN in mms and flange class.

Example: VFA/80 PN15.

DN	B	L	Weight (Kg)
50 2"	147	470	11.5
65 2 1/2"	157	470	14
80 3"	163	470	18
100 4"	174	470	21
125 5"	209	490	28.5
150 6"	227	490	36
200 8"	252	490	51
* 250 10"	239	530	97
* 300 12"	267	530	136
* 350 14"	295	530	190
* 400 16"	325	700	235
* 500 20"	418	700	352

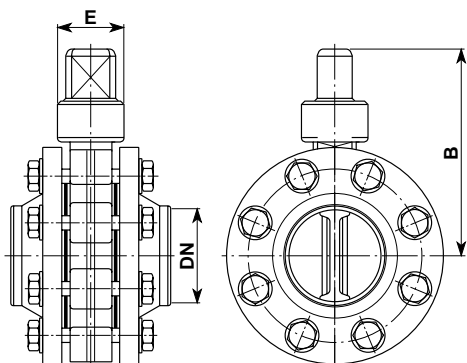
Note: For unlisted sizes, see general specifications.
Weights are referred to the PN16 version.

* Rev reducer control-fitted valve to be preferred (VFA-MR/ version).



VFA/

VFA-MP/ - BUTTERFLY VALVE WITH CONTROL ROD COUPLING FOR RECESSED INSTALLATION

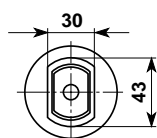


When ordering, please specify:
Code, DN in mms and flange class.

Example: VFA-MP/150 PN15

DN	B	E	Weight (Kg)
50 2"	175	60	11.5
65 2 1/2"	184	60	14
80 3"	191	60	18
100 4"	202	60	21
125 5"	234	73	29
150 6"	247	73	37
200 8"	277	73	52

Note: For unlisted sizes, see general specifications.
Weights are referred to the PN16 version.
Control rod supplied on request.

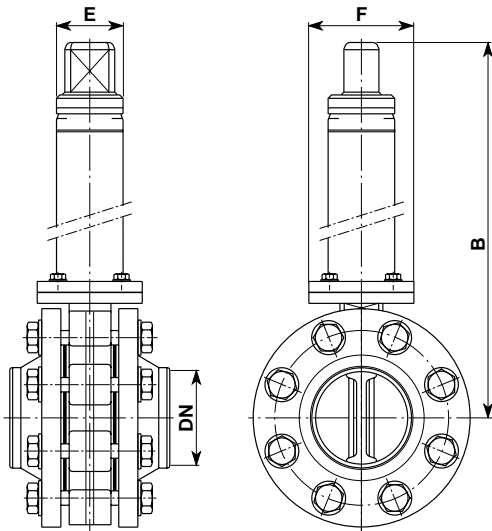


Control rod coupling in accordance with UNI 9245 Standards.



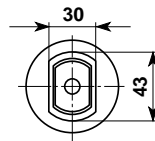
VFA-MP/

VFA-MS/ BUTTERFLY VALVES WITH CONTROL ROD COUPLING FOR UNDERGROUND INSTALLATION



DN	B	E	F	Weight (Kg)
50	2"	210	92	10.5
65	2 1/2"	220	92	19.5
80	3"	225	92	23.5
100	4"	231	92	27
125	5"	251	92	37.5
150	6"	263	92	44.5
200	8"	292	92	63.5

Note: For unlisted sizes, see general specifications.
Weights are referred to the PN16 version.
Control rod supplied on request.



Control rod coupling in accordance with UNI 9245 Standards.

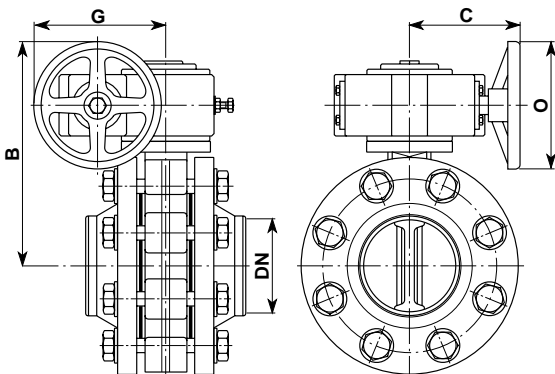


VFA-MS/

When ordering, please specify:
Code, DN in mms and flange class.
Example: VFA-MS/250 PN15

The control extension rod is fitted with gaskets for perfect seal.

VFA-MR/ BUTTERFLY VALVE WITH REV REDUCER CONTROL



DN	B	C	G	O	Weight (Kg)
50	2"	210	92	150	15
65	2 1/2"	220	92	150	18
80	3"	225	92	150	21.5
100	4"	231	92	150	25
125	5"	251	92	150	32
150	6"	263	92	150	39.5
200	8"	292	92	150	54.5
250	10"	345	97	137	97
300	12"	432	130	221	136
350	14"	461	130	221	190
400	16"	523	155	240	235
500	20"	623	155	240	352

Note: For unlisted sizes, see general specifications.
Weights are referred to the PN16 version.



VFA-MR/

When ordering, please specify:
Code, DN in mms and flange class.
Example: VFA-MR500 PN15

SPECIAL APPLICATIONS - supplied only on request

BM4-E/
SLAM-SHUT VALVE WITH
ELECTROMAGNETIC ACTUATOR



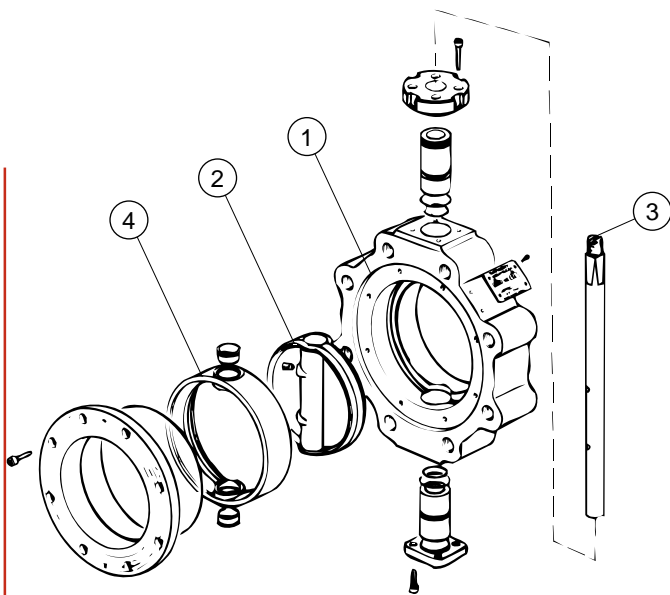
VFA-GS/
BUTTERFLY VALVE WITH
PARTING JOINT



VFA-GD/
BUTTERFLY VALVE WITH
DIELECTRIC JOINT



Note: For dimensions, please contact our Technical Department.



1. Valve body
2. Butterfly
3. Shaft
4. Seal

The specially designed gasket is housed in the body itself and features:

- A reduced surface in contact with the fluid, thus minimizing risk of gasket deformation eventually due to solvents present in the fluid.
- High thickness for maximum elasticity so as to prevent any deformations or stresses due to foreign matter.
- Special shape to ensure perfect seal both internally and externally.

The butterfly valve disc is carefully machined and appropriately shaped all around in order to ensure perfect butterfly and gasket fit.

The control shaft is mounted on bushes and perfect seal is guaranteed by means of O-rings. Bushes are easily removable so that they can be readily replaced even with valve in operation.

All VFA/ valves feature pressed steel bodies in sizes from DN50 to DN250 and cast steel bodies in sizes from DN300 to DN500.

Counterflanges are secured by means of coach screws onto the valve body, so that the valve can be used as a terminal unit.

Valve body is cold zinc-plated in iridescent yellow in accordance with ISO 2081 standards. Upon request, valves can also be supplied with light grey epoxy paint finish.

SPECIFICATIONS

Dimensions	DN 50 to DN 500 (2" to 20")		
Flange Class	PN 16	ANSI 150	
	bar	bar	
Maximum Working Pressure (Pe) at Room Temperature	16	19.3	
Valve Class (Pn)	16	19.3	
Test pressures	Hydrostatic pressure with valve open	24	29
	Hydrostatic pressure with valve closed	18	21
	Pneumatic pressure with valve open	5,5	5,5
	Pneumatic pressure with valve closed	5,5	5,5
Working Temperature	With Buna-N gaskets	-10 to +100°C	
	With Viton gaskets	-10 to +100°C	

MATERIALS

Body	DN 50 to DN 250	pressed steel	ASTM A 105
	DN 300 to DN 500	cast steel	Fe-G 450 UNI 3158
Butterfly	DN 50 to DN 300	pressed steel	Fe 410 UNI 7746
	DN 350 to DN 500	cast steel	Fe-G 450 UNI 3158
Shaft	DN 50 to DN 500	stainless steel	X 30 CR 13 UNI 6901
Gasket	Standard VFA-series valves are fitted with NBR (Buna-N) gaskets. Viton gaskets supplied on request.		